

SLATESKIN

FLEXIBLE STONE VENEER



LIGHT WEIGHT
EASY TO FIX
QUICK TO INSTALL
MULTIPLE APPLICATIONS

2 MM SEMI FLEXIBLE STONE VENEER WITH POLYESTER RESIN BACKING
1 MM SUPER SLIM FLEXIBLE STONE VENEER WITH HPL FLEECE BACKING



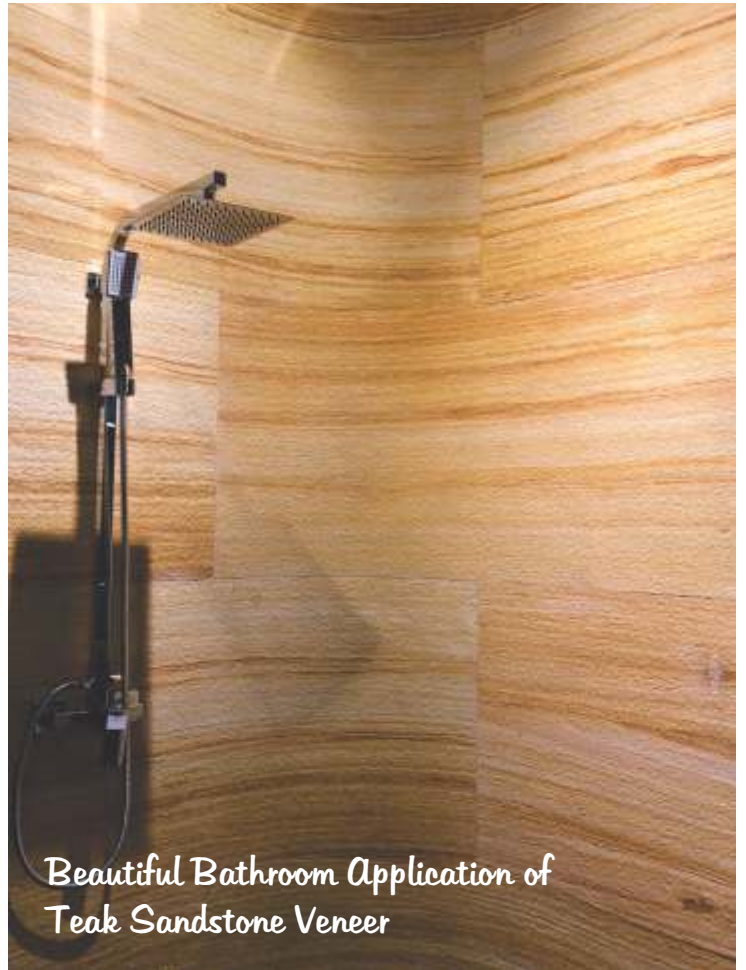
*Beautiful Bedroom Application of
Manchester Green Stone Veneer*



*Sheffield Grey
Bar Application*



Beautiful Wall Application of Harrogate Rustic Stone Veneer in Bathroom



Beautiful Bathroom Application of Teak Sandstone Veneer



Forest Brown and Forest Choco Stone Veneer



Beautiful Bathroom Application of Manchester Green



*Cotswold Sandstone
Beautiful Application on wall in a Hotel Lobby*



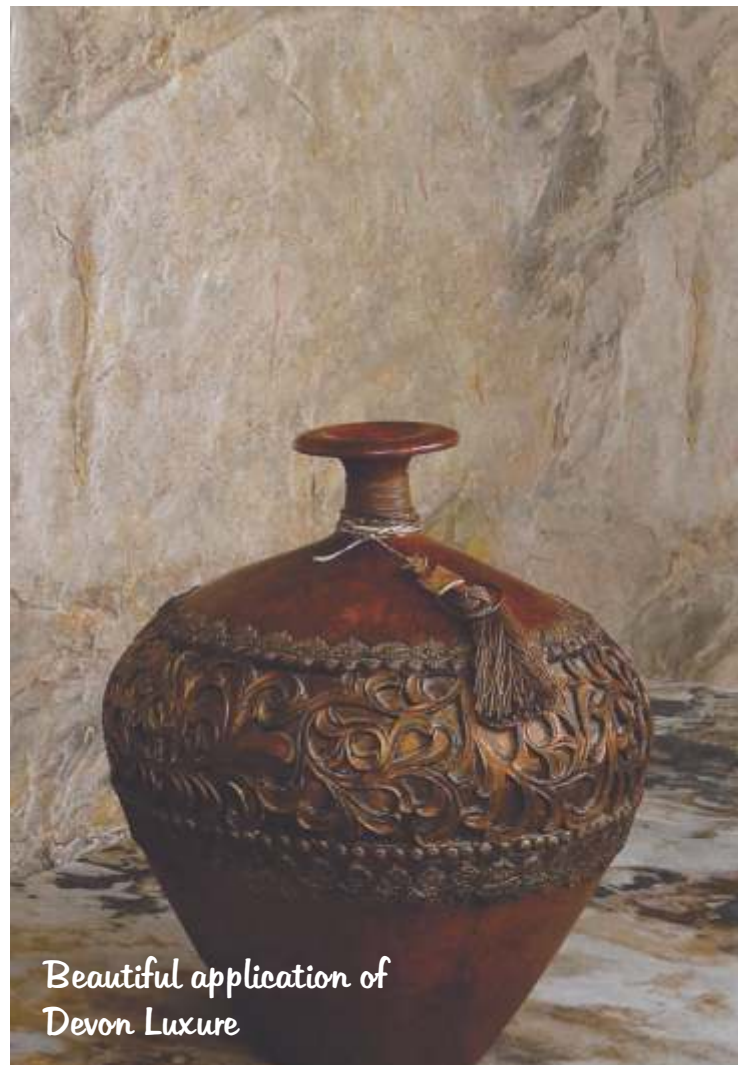
Beautiful application of Sheffield Grey in Hotel Lobby



Beautiful Application of Translucent Stone Veneer



Beautiful Wall Application of Teak Sandstone



Beautiful application of Devon Luxure



Beautiful Wall Application in a Showroom of Harrogate Rustic



Beautiful application of Harrogate Rustic on Furniture



Beautiful Bathroom Application of Translucent Veneer



Beautiful Veneer Application on a Wine Chiller



Beautiful wall application of Harrogate Rustic



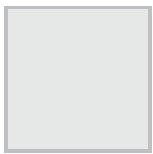
Beautiful Furniture Application of 1 mm Super Flexible Stone Veneer



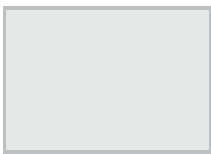
Beautiful Application of Stone Veneer on Planters

AVAILABLE IN ANY SIZE

SQUARE SHAPE



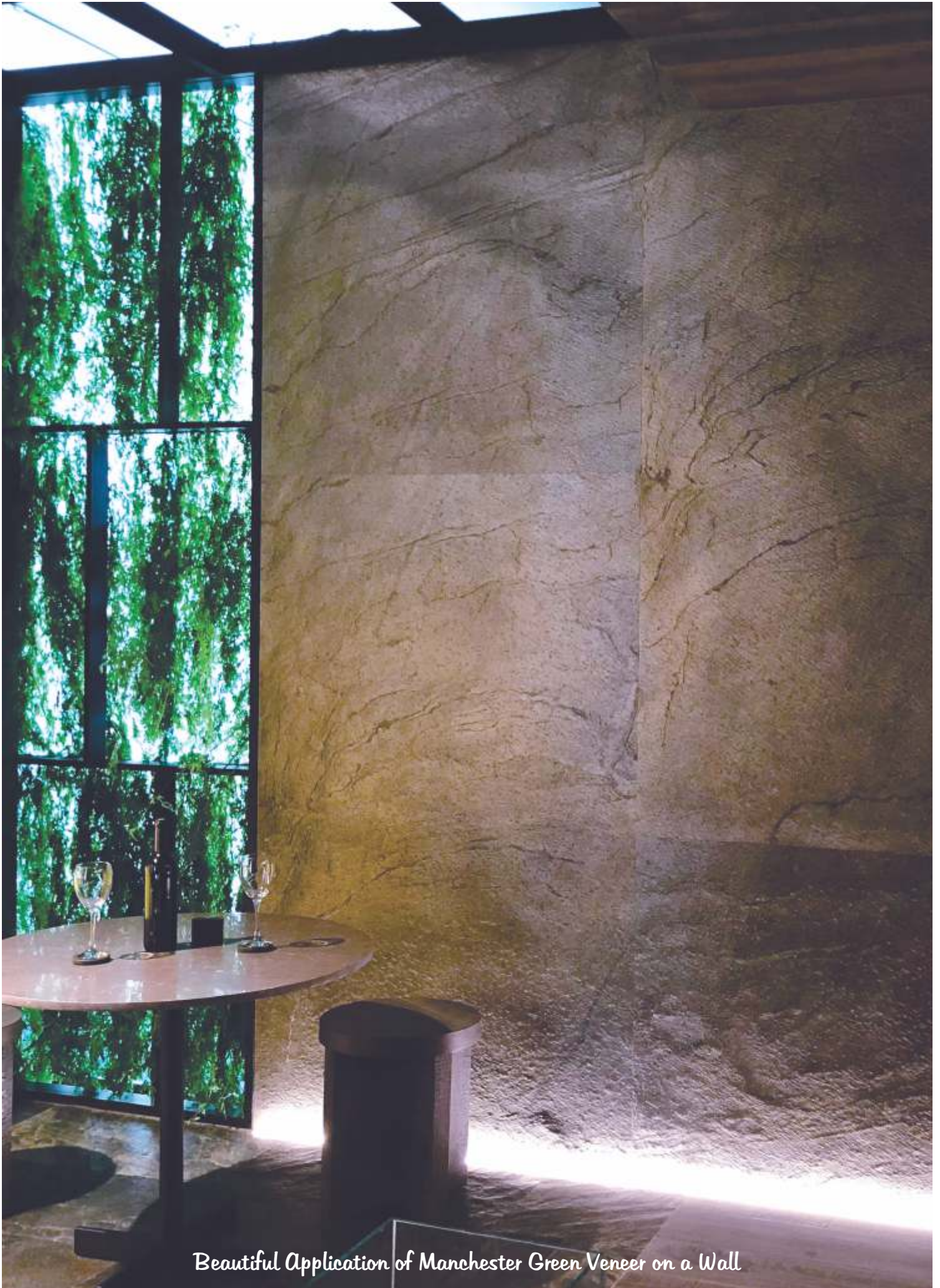
RECTANGULAR SHAPE



TRIANGULAR SHAPE



Beautiful Application of Stone Veneer on Planters



Beautiful Application of Manchester Green Veneer on a Wall



Outdoor Fencing Light Weight Very Strong Wall Panels





York Black

Size available : 61x122 cm & 122x244 cm
Size : 122x280 cm on special order



Port Land Beige

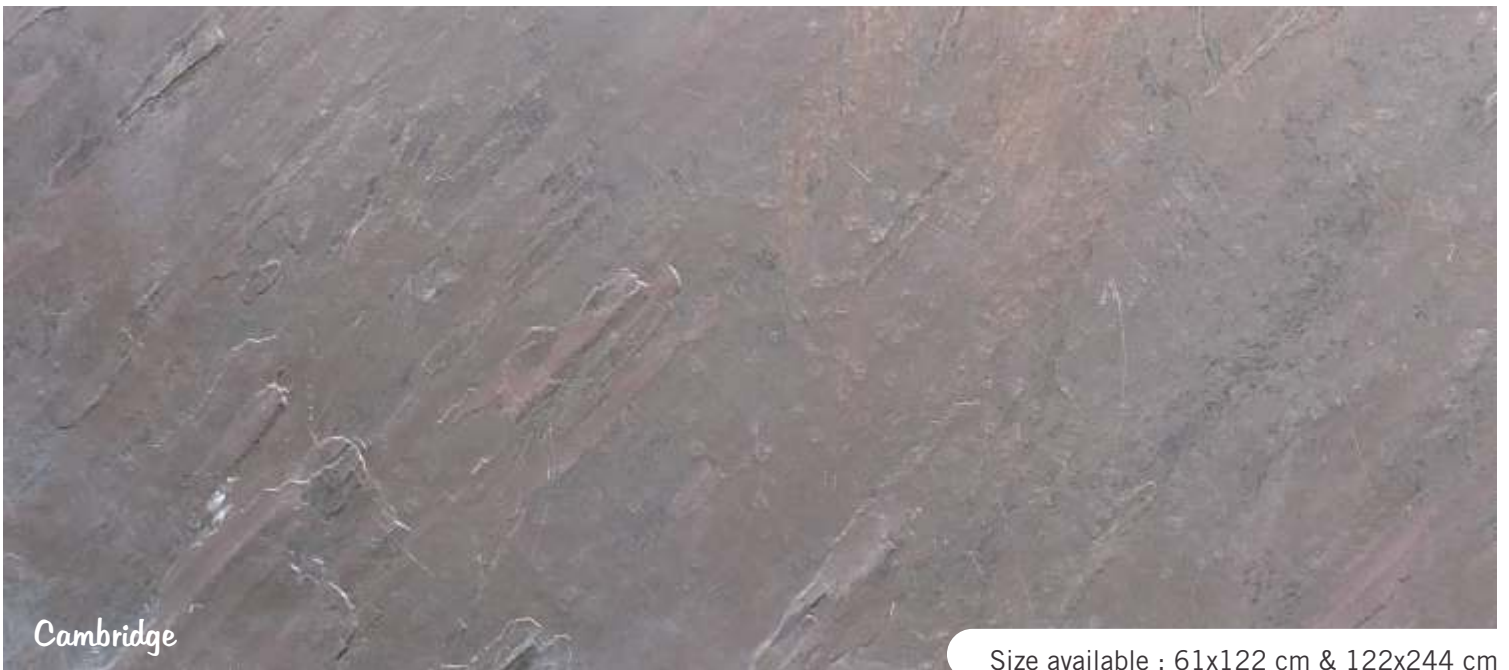
Size available : 61x122 cm & 122x244 cm
Size : 122x280 cm on special order



Welsh Black

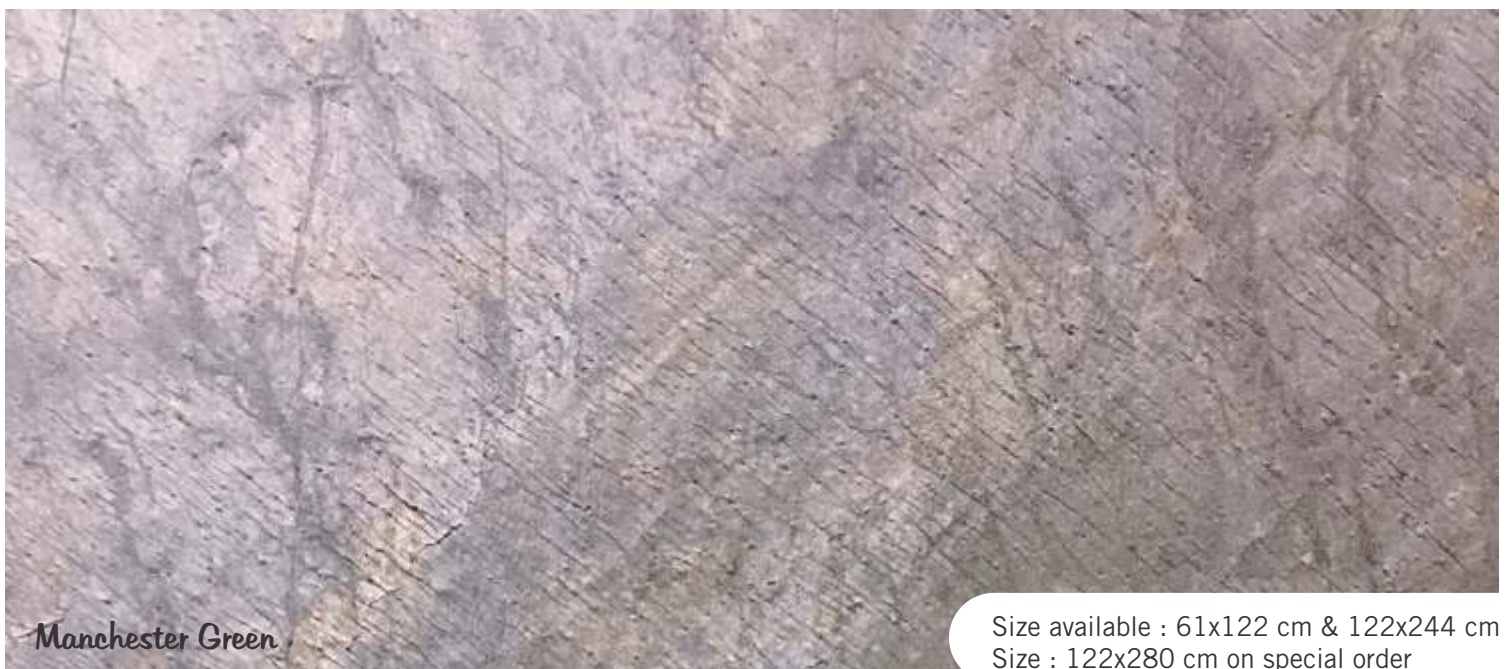
Size available : 61x122 cm & 122x244 cm
Size : 122x280 cm on special order













PRODUCT SLATE SKIN STONE VENEER

1 mm Thick Super Flexible HPL FLEECE Back

Sizes Available

Standard Sizes : 61 x 122 cm & 122 x 244 cm

On order any Size : 30 x 30 cm to 122 x 280 cm Can be made depending on the color.

2 mm Thick Semi Flexible Polyester Resin Back

Sizes Available

Standard Sizes : 61 x 122 cm & 122 x 244 cm

On order any Size : 30 x 30 cm to 122 x 280 cm Can be made depending on the color.



Beige Pearl

Size available : 61x122 cm
Size : 122x244 cm on special order



Teak

Size available : 61x122 cm



Pearl White

Size available : 61x122 cm
Size : 122x244 cm on special order



Cotswold Sandstone

Size available : 61x122 cm



Grey Sandstone

Size available : 61x122 cm



Rainbow

Size available : 61x122 cm



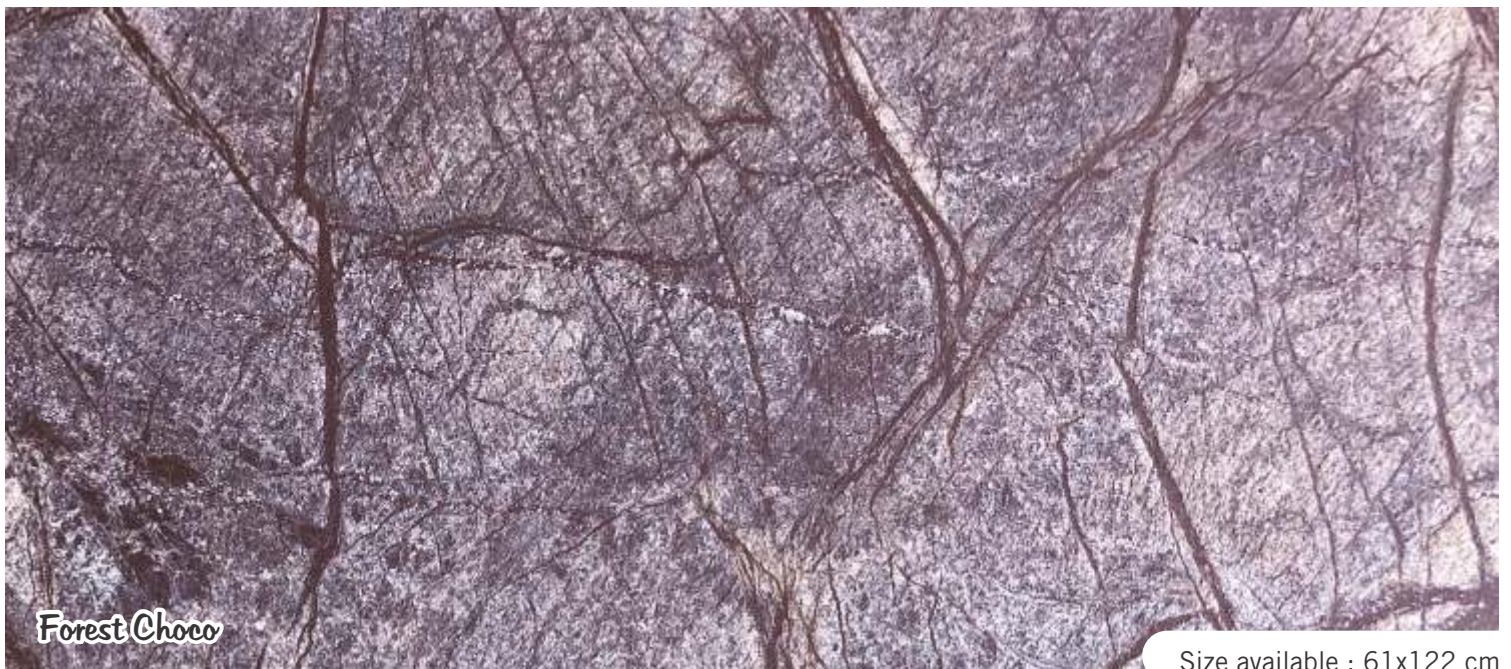
Yellow Sandstone

Size available : 61x122 cm



Red Sandstone

Size available : 61x122 cm





Concrete Grey Veneer

Size available : 61x122 cm & 122x244 cm
Size : 122x280 cm on special order



Concrete Beige Veneer

Size available : 61x122 cm & 122x244 cm
Size : 122x280 cm on special order

MARBLE VENEER



White Marble

Size available : 61x122 cm



Monsoon Black

Size available : 61x122 cm

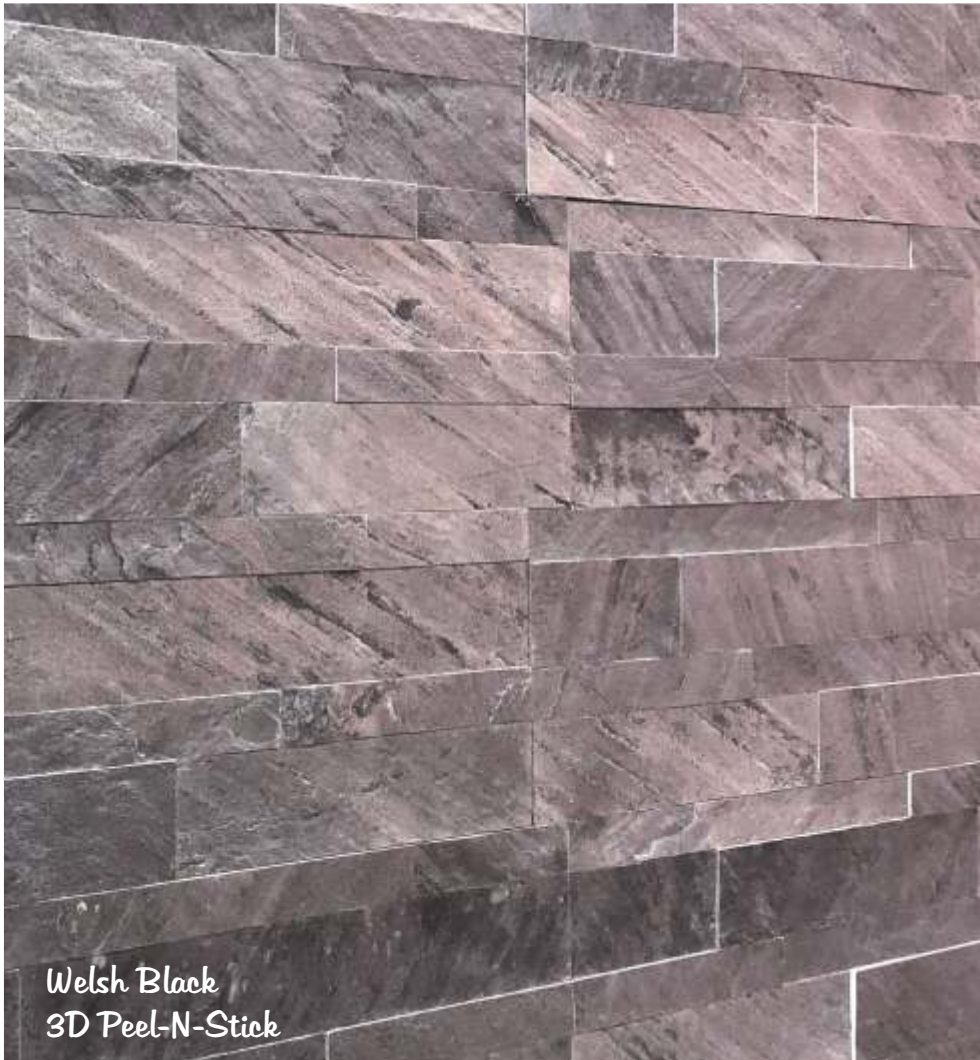




Beige Pearl
3D Peel-N-Stick



Wembley Multi
3D Peel-N-Stick



Welsh Black
3D Peel-N-Stick



Kingston Quartz
3D Peel-N-Stick



Leeds Quartz
3D Peel-N-Stick



New Castle Copper
3D Peel-N-Stick



Pearl White
3D Peel-N-Stick



York Black
3D Peel-N-Stick



Bristol Silver
3D Peel-N-Stick



Nottingham Gold
3D Peel-N-Stick



Rainbow
3D Peel-N-Stick



Manchester Green
3D Peel-N-Stick

3D PEEL-N-STICK WALLING



Costwold Sandstone
3D Peel-N-Stick



Teak Sandstone
3D Peel-N-Stick



Kent Forest
3D Peel-N-Stick



Cambridge
3D Peel-N-Stick



Harrogate Rustic
3D Peel-N-Stick

Sizes Available

Standard Sizes : 8' x 4' (122 x 244 cm), 2' x 4' (61 x 122 cm), 1' x 2' (30 x 60 cm)

Large sheet only on order : 125 to 150 cm x 250 to 300 cm

Made in selected colour only on special request



Harrogate Rustic Translucent



York Black Translucent



Manchester Green Translucent



New Castle Copper Translucent

Sizes Available

Standard Sizes : 8' x 4' (122 x 244 cm), 2' x 4' (61 x 122 cm), 1' x 2' (30 x 60 cm)

Large sheet only on order : 125 to 150 cm x 250 to 300 cm

Made in selected colour only on special request



Kent Forest Translucent



Oxford Gold Translucent



Sheffield Grey Translucent



Manchester Green Translucent

Information of Product

Specifications :

100 % natural stone surface, Harder and stronger than slate tiles by reinforcing with polyester resin, Thickness 2-3 mm, weight ca. 2.20 / m².

Application area of use :

Our Stone Veneer can be applied in almost all areas (Wall Coverings, Fireplace, Surrounds, Bathrooms, Wet-areas, Exteriors, Claddings, Furniture, Doors, Floor Coverings, Ceilings, Kitchens).

For these areas we recommend adhesives from companies like SOUDAL, MAPEI, C.T.1.

Cutting tools to work with :

Veneer can be worked with any commercially available tools available in all DIY stores. It can be cut by any tile cutting blades.

- Cutting with hard-metal tipped circular saw, skill saw (diamond blade, stone saw).
- Drilling and routing : Use tools for wood or stone.
- Flexibility can be increased by applying heat (using heat-gun around 400°C).

Lamination on wood, metals, plasterboard, fiber cement, XPS sheet :

When laminating (bonding) Veneer onto wood, fiber cement, plasterboard and metal, as well as most furniture applications, we recommend a 1 component PU (polyurethane) adhesive.

Adhesive :

- PU-Adhesive, MS-Polymer, Epoxy, Silicone.

Sealing and Protection :

We suggest any good stone impregnation and sealer application.

- Low traffic wall & floor: any good stone sealer.
- Wet areas / medium traffic wall & floor : Any good two component PU sealer.
- High traffic (floor commercial area) : 2 Component PU Sealer.

Technical Properties (raw material) General

Front	Real Stone
Fire Behavior	Individual Assessment
Thermal Expansion (194 °F)	0,5 – 0,8 mm/m (≈0,08 %)
Temperature Limits	-58 /+203 °F
Formaldehyde	Stone-Veneer is formaldehyde-free
Back	Glass fibre fabric in polyester resin matrix

Specific Surface

	Colorful Slate	Quartzite Slate
Thickness (mm)	1,0-1,5	1,0-2,0
Average Abrasion (mm) IS: 9162-1979	0,7	0,9
Maximum Abrasion (mm) IS: 9162-1979	0,8	1,0
Water Absorption (%) ASTM C-121:	2,5	1,9
Weight Per Square Meter (lbs)	2,2 – 3,3	2,2 – 4,4

Main Compositions

Top Layer	in %	Back Layer	in %
Oxygen (O)	44,6	Oxyger (O)	73
Carbon (C)	31	Carbon (O)	26
Silicone (Si)	13		
Aluminium (Al)	5,6		
Iron (Fe)	3,4		
Patassium (K)	2,4		

Test according to ASTM

C-121:

Water absorption in unsealed surface + 2,50%.

UV resistance test :

Resistance against UV radiation (UV-B) to DIN EN ISO 11507.

Test cycle : 4h Radiation 50°C

4h Bedew 40°C

Duration of Test : 1000 h rating after 250 h, 500 h, 750 h.

Rating : Change in color to DIN EN ISO 11664-4, Sp62 Fa. X-Rite, measurement geometry: d/8°, kind of light : D65/10° observation angle, measurement of brightness to DIN 67530.

Abrasion test according to DIN EN ISO 10545-7 :

Reached Class PEI 2 without surface treatment.

PEI I Tiles for areas with light traffic and without abrasive dirt, e.g. bathrooms, bedrooms.

PEI II PEI II Tiles for areas with average traffic and medium to low abrasion, e.g. studying rooms, living rooms.

PEI III Tiles for areas with height medium to high traffic and average abrasion, e.g. foyer, kitchen in private residences.

PEI IV Tiles for areas with intense traffic, e.g. restaurants, offices, shops, public offices (excluding floors under cash desks and shop counters and narrow unavoidable passageways).

PEI V Tiles for areas with especially intense traffic.

Composite layers of Stone Veneer

Reinforcement layer
Fiberglass layer
Adhesive layer
Natural stone layer



Stone Veneer is made from natural stone surface 2mm thick (approx.), weighs 2.0 kg per square meter.

Fire Retardant Stone Veneer 2mm Thick



Available on request for special jobs

Expert evaluations

Expert evaluation (French VOC / CMR regulation)

The product Stone Veneer, has been tested on behalf of SLATESKIN

This evaluation bases on the test criteria of the decree no. 2011-321 of March 23rd, 2011 (VOC) and executive decisions of May 28th, 2009 and April 30th, 2009 (CMR) of the French Ministry of Ecology, Sustainable Development, Transport and Housing.

The results documented in the test report were evaluated as follows:

VOC- Decree France

Sample: A002: Stone Veneer,

Substance	Concentration (Test chamber air) [$\mu\text{g}/\text{m}^3$] after 28 days	Class			
		C	B	A	A+
Formaldehyde	2	>120	<120	<60	<10
Acetaldehyde	3	>400	<400	<300	<200
Toluene	4	>600	<600	<450	<300
Tetrachlorethene	< 1	>500	<500	<300	<250
o,m-p-Xylene	< 1	>400	<400	<300	<200
1,2,4-Trimethylbenzene	< 1	>2000	<2000	<1500	<1000
1,4-Dichlorobenzene	< 1	>120	<120	<90	<60
Ethylbenzene	< 1	>1900	<1900	<1000	<750
Ethylenglycol-mono-butylether	< 1	>3000	<3000	<1500	<1000
Styrene	< 1	>600	<600	<300	<250
TVOC _{6h}	22	>3900	<3900	<1900	<1300

CMR Regulation

Substance	Concentration (Test chamber air) [mg/m^3] after 28 days	Limit value [mg/m^3] after 28 days
Benzene	< 1	< 1
Trichlorethene	< 1	< 1
Dibutylphthalate (DBP)	< 1	< 1
Diethylhexylphthalate (DEHP)	< 1	< 1

Certification



SLATESKIN

Mob./Whatsapp No. : +91-9871732020, +91-8285044444, +91-9311677011, +91+9311677018

Email: pm@slateskin.com | Web: www.slateskin.com

Head Office : Khasra No. - 1093/1, Near RIICO Industrial Area, Roopangarh, Distt. - Ajmer, Rajasthan (INDIA)